



AirFit™ F30i

Fitting guide for AirFit F30i



1 With one hand holding the bottom of the cushion and the other holding the conduit frame, position the mask in front of the face.



2 Place the cushion under the nose and against the face. With the ResMed logo and headgear facing up, pull the headgear over the head.



3 Bring the lower headgear straps under the ears and attach the magnetic clips to the frame connectors.



4 Undo the fastening tabs on the upper headgear straps and pull evenly.



5 Repeat with the lower headgear straps.



6 Squeeze the side buttons on the elbow and detach from the frame. Connect the air tubing from the device to the elbow, then reattach it to the frame.



For people with long hair, we recommend feeding the hair through the back of the headgear, as pictured. If tied in a ponytail, it should sit high enough to fit through the back of the headgear.

Refer to the user guide for further instructions and complete labelling information including indications, contraindications, warnings and precautions.

¹ ResMed onsite fitting study of 73 current full face CPAP mask users and 14 sleep professionals from Nov. 5-14, 2018 in multiple US locations who trialled AirFit F30i and a competitor full face mask.
² The mask contains magnets that may interfere with certain implants or medical devices. They are not to be used by patients where they, or anyone in close physical contact while using the mask, have active medical implants that interact with magnets and/or metallic implants/objects containing ferromagnetic material. Keep the mask magnets at a safe distance of at least 6 inches (150 mm) away from implants or medical devices that may be adversely affected by magnetic interference. Please refer to the user guide for complete information, including magnet contraindications and warning.
³ ResMed guided external clinical study of 48 evaluable current full face CPAP mask users from 24/10/2018 to 20/11/2018 in Sydney, AU and San Diego, CA, who trialled AirFit F30i and competitor full face mask at home. Data on file: ID A4484728.
 © 2023 ResMed Ltd. 10111833r1 2023-12

ResMed.com/AirFitF30i



AirFit™ F30i

The new face of bedtime freedom

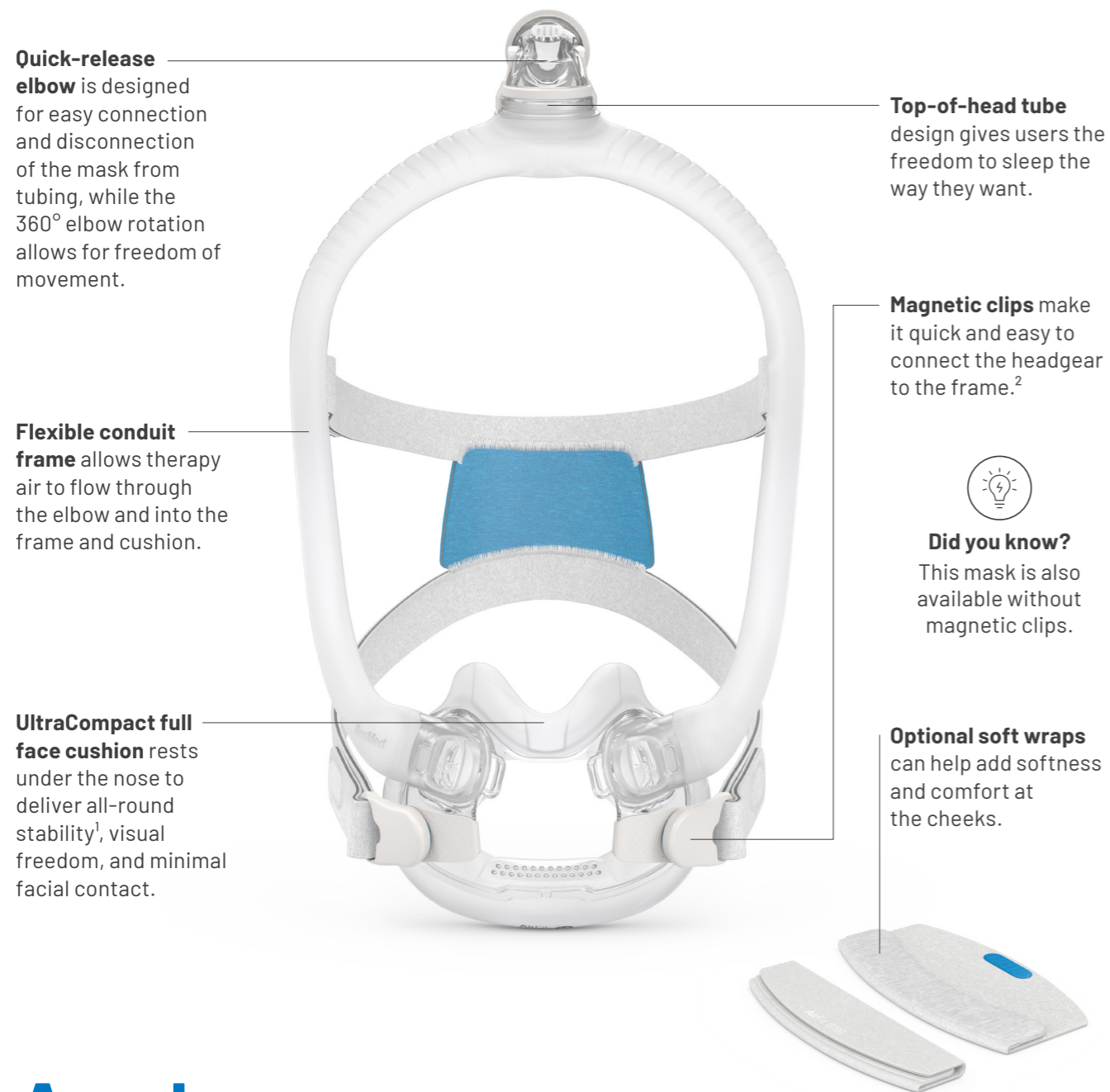
Give your customers a mask that lets them do more in bed when awake or asleep. ResMed AirFit™ F30i is a tube-up UltraCompact full face mask designed with a reliable seal, under-the-nose cushion and the freedom to sleep in many different positions. In a ResMed study, users rated AirFit F30i 4/5 stars for overall mask comfort and seal.¹



Awaken your best.

ResMed.com/AirFitF30i

AirFit F30i highlights



Awaken your best.

The UltraCompact, under-the-nose cushion of AirFit F30i full face mask means there's no discomfort or red marks on the bridge of the user's nose.

Made for a natural sleep experience

ResMed's freedom-focussed AirFit F30i allows customers who toss and turn at night to move comfortably in their sleep.³ Compared to a traditional full face mask, the tube-up design and 360° rotation of AirFit F30i offer users a more natural sleep experience. If your customer is an active sleeper, give them a full face mask that lets them sleep in many different positions.

Product codes

Conduit frame
63368 (SML)
63369 (STD)
63370 (LGE)

Conduit frame non-magnetic clips
63346 (SML)
63347 (MED)
63348 (LGE)

UltraCompact full face cushion
63350 (S) **63352 (SW)**
63351 (M) **63353 (W)**

Soft wraps (optional)
63373

Headgear
63372

Non-magnetic headgear
63317

Magnetic clips² (x2)
63475

Non-magnetic clips (x2)
63335

	ANZ		ANZ
AirFit F30i: S/SML	63336	AirFit F30i non-magnetic: S/SML	63375
AirFit F30i: S/STD	63337	AirFit F30i non-magnetic: S/STD	63376
AirFit F30i: M/STD	63338	AirFit F30i non-magnetic: M/STD	63377
AirFit F30i: W/STD	63339	AirFit F30i non-magnetic: W/STD	63378
AirFit F30i: M/LGE	63340	AirFit F30i non-magnetic: M/LGE	63379



AirFit™ F30i
Full face mask