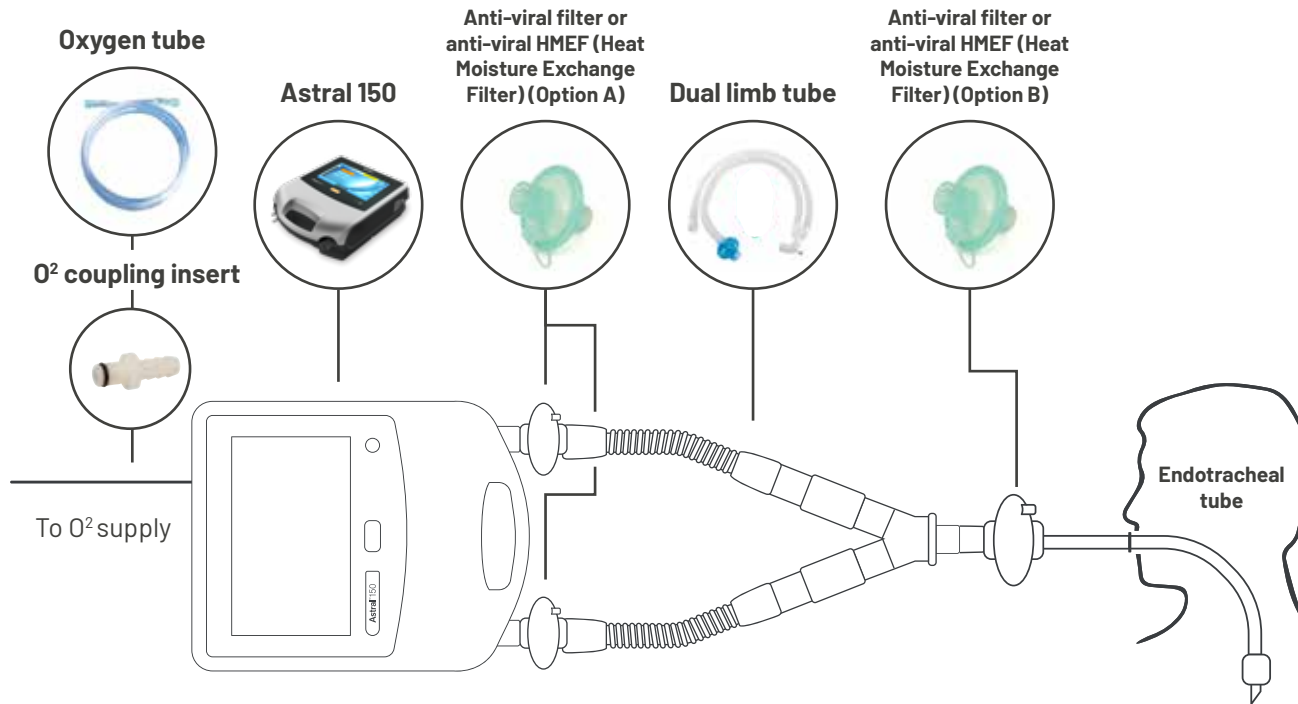




# Astral 150 with oxygen and invasive circuit set up



## Notes:

### Astral notes

Max pressure: 50cm H<sub>2</sub>O

Max backup breath rate: 50bpm

iVAPS mode is **not** recommended for COVID-19

**Alarms:** Low pressure, high pressure, low V<sub>te</sub>, high V<sub>te</sub>, low V<sub>ti</sub>, high V<sub>ti</sub>, low RR, high RR, ventilation stopped, circuit fault, ventilation not started

### Oxygen notes:

- Astral can take supplemental oxygen up to 30L/min
- FiO<sub>2</sub> monitoring available on the device if oxygen connected the device

### Notes:

- To ensure optimal ventilation, perform a "Learn Circuit" prior to patient use
- Double Limb Adapter (Part Number: 27940) assembled internal to device is required for dual limb circuit, refer to User Guides for assembly instructions

24162	<b>Astral 150</b>
21303 (22mm) or 21304 (15mm)	<b>Dual limb tube</b> *Any dual limb tube can be used with this circuit
24966 24967 24969	<b>Anti-viral filter (50 pack)</b> <b>Anti-viral HMEF (Heat Moisture Exchange Filter) for adults (50 pack)</b> <b>HMEF for paediatric (50 pack)</b> *Any anti-viral filter can be used with this circuit
Supplied by hospital	<b>Oxygen tube</b>
24971	<b>O<sub>2</sub> Coupling Insert</b>
Supplied by hospital	<b>Endotracheal tube</b>



ResMed Ltd  
1 Elizabeth Macarthur Drive  
Bella Vista NSW 2153 Australia  
+61 (02) 8884 1000 or 1800 658 189