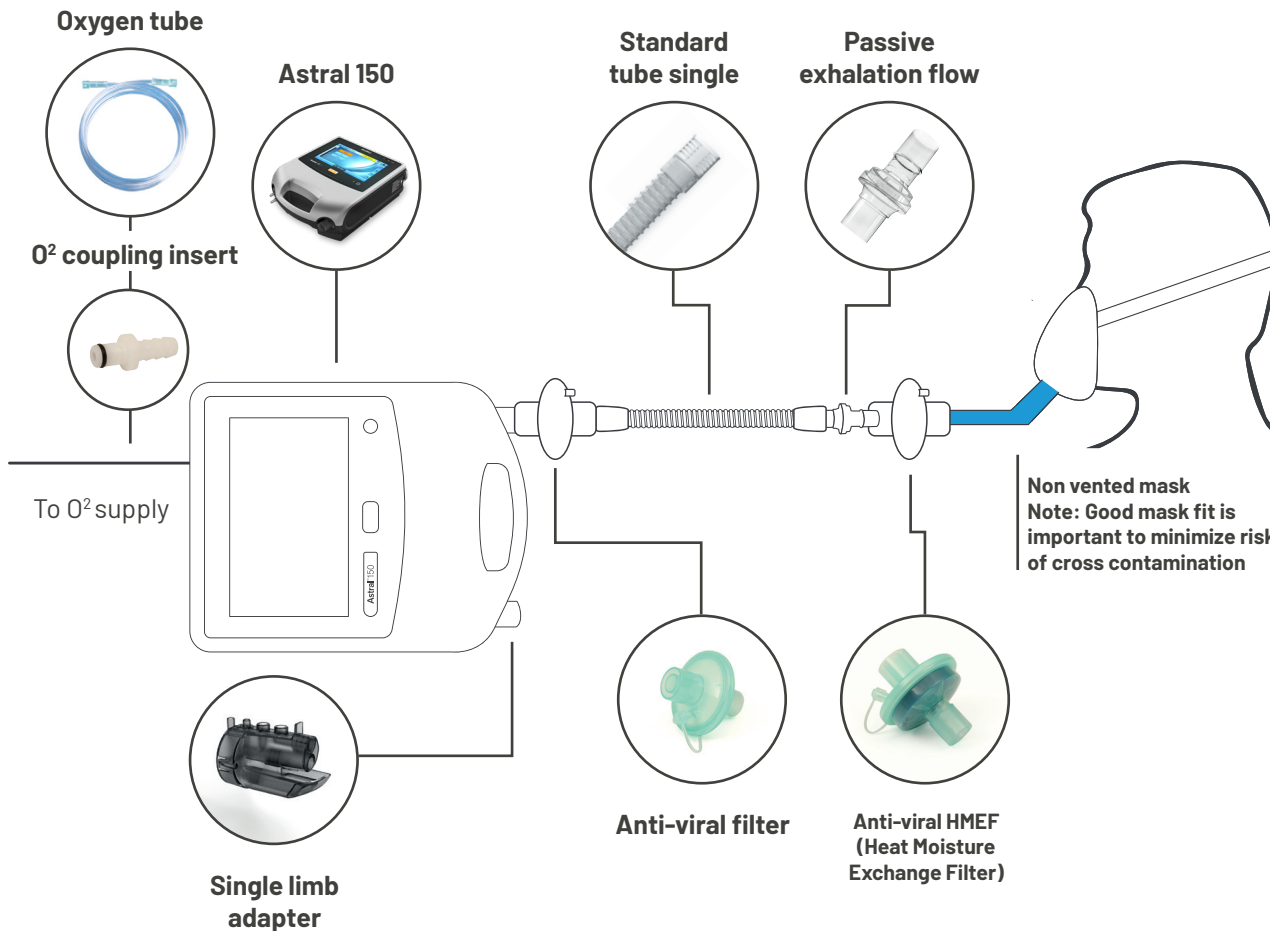




Astral 150 with oxygen and non-invasive circuit set up



Only pressure modes available with single limb setups.

Astral notes

Max pressure: 50cm H₂O

Max backup breath rate: 50bpm

iVAPS mode is **not** recommended for COVID-19

Alarms: Low pressure, high pressure, low V_te, high V_te, low M_Ve, high M_Ve, low RR, high RR, ventilation stopped, circuit fault, ventilation not started

Oxygen notes

- Astral can take supplemental oxygen up to 30L/min
- FiO₂ monitoring available on the device if oxygen connected the device

Note:

- To ensure optimal ventilation, perform a "Learn Circuit" prior to patient use.
- Single Limb Adapter (Part Number: 27942) assembled internal to device is required for single limb circuit, refer to User Guides for assembly instructions

24162	Astral 150
27942	Single Limb Adapter
24988	Passive exhalation flow
21948	Single limb tube
24966 24967	Anti-viral filter (50 pack) Anti-viral HMEF (Heat Moisture Exchange Filter) for adults (50 pack)
24969	HMEF for paediatric (50 pack)
Supplied by hospital	Oxygen tube
24971	O₂ Coupling Insert
S - 60971 M - 60972 L - 60973	Non-Vented AcuCare™ Full Face Mask F1-0



ResMed Ltd
1 Elizabeth Macarthur Drive
Bella Vista NSW 2153 Australia
+61 (02) 8884 1000 or 1800 658 189