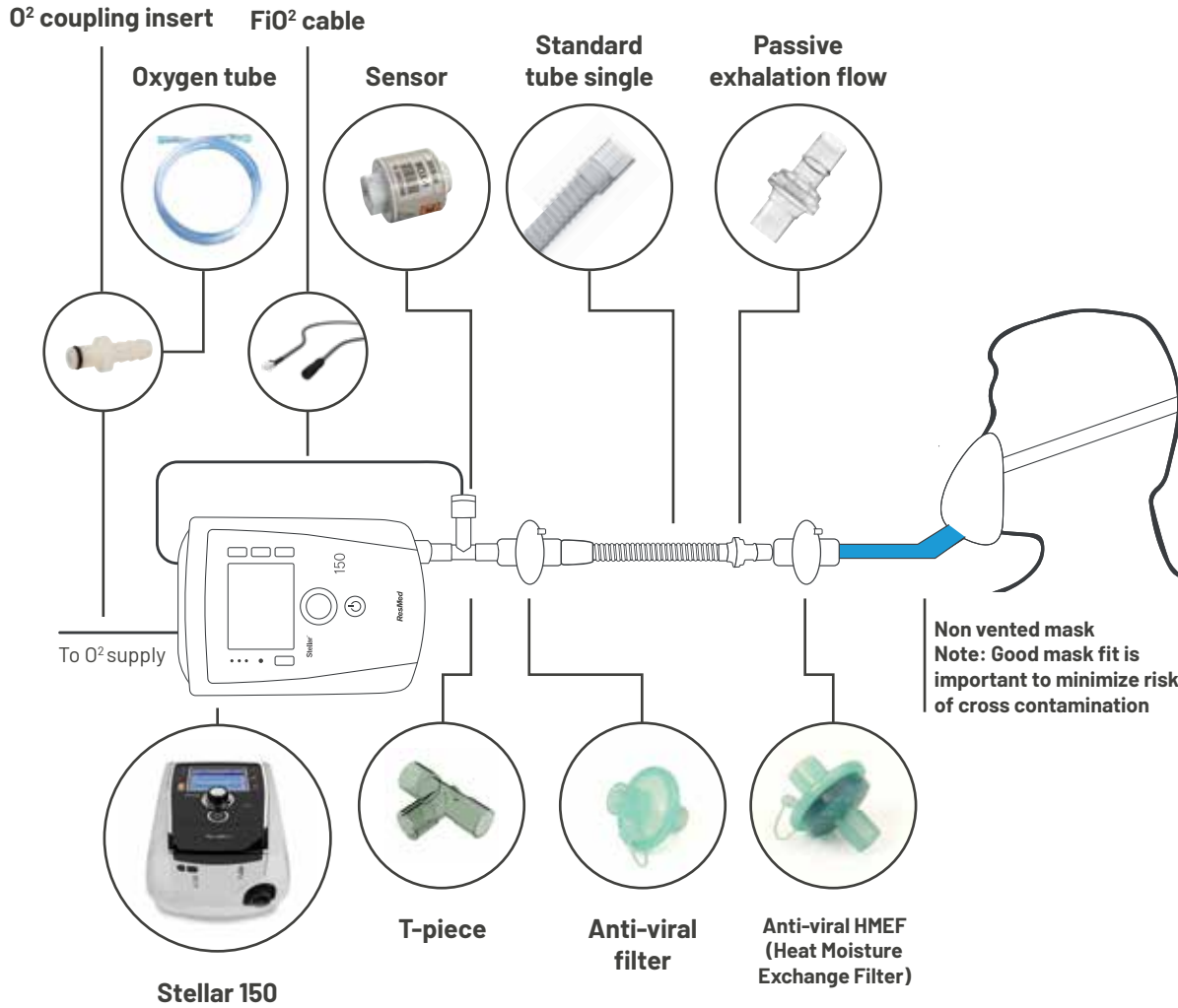




# Stellar 150 with oxygen and non-invasive circuit set up



Use in pressure control mode titrated to achieve desired mL/kg

**Stellar notes**

Max pressure: 40cm H<sub>2</sub>O

Max backup breath rate: 60bpm

iVAPS mode is **not** recommended for COVID-19

**Alarms:** Circuit disconnect, low minute ventilation, apnea alarm, low FiO<sub>2</sub>, high FiO<sub>2</sub>, high pressure, low pressure, high RR, low RR, high leak, blocked tub, FiO<sub>2</sub> sensor disconnect

**Oxygen notes**

- Stellar can take supplemental oxygen up to 30L/min
- FiO<sub>2</sub> monitoring available on the device if oxygen connected to Stellar (back of device)

**Notes:**

- Patients receiving therapy via a non-invasive circuit should be cared for in airborne isolation rooms and staff should wear full PPE (including N95/P2 masks) while in the patient's room.
- To ensure optimal ventilation, perform a "Learn Circuit" prior to patient use.

24162	<b>Stellar 150</b>
CAP008617	<b>FiO<sub>2</sub> monitoring sensor for Stellar</b>
CAB015770	<b>FiO<sub>2</sub> cable (for oxygen sensor CAP008617)</b>
RAC008157	<b>T-piece adapter for FiO<sub>2</sub> monitoring kit</b>
21948	<b>Standard tube single</b>
24988	<b>Passive exhalation flow</b>
24966	<b>Anti-viral filter (50 pack)</b> <b>Anti-viral HMEF (Heat Moisture Exchange Filter) for adults (50 pack)</b> <b>HMEF for paediatric (50 pack)</b> *Any anti-viral filter can be used with this circuit
24967	
24969	
24971	<b>O<sub>2</sub> Coupling Insert</b>
S - 60971 M - 60972 L - 60973	<b>Non-Vented AcuCare™ Full Face Mask F1-0</b>



ResMed Ltd  
 1 Elizabeth Macarthur Drive  
 Bella Vista NSW 2153 Australia  
 +61 (02) 8884 1000 or 1800 658 189  
 © 2020 ResMed Ltd. 10111982 2020-04